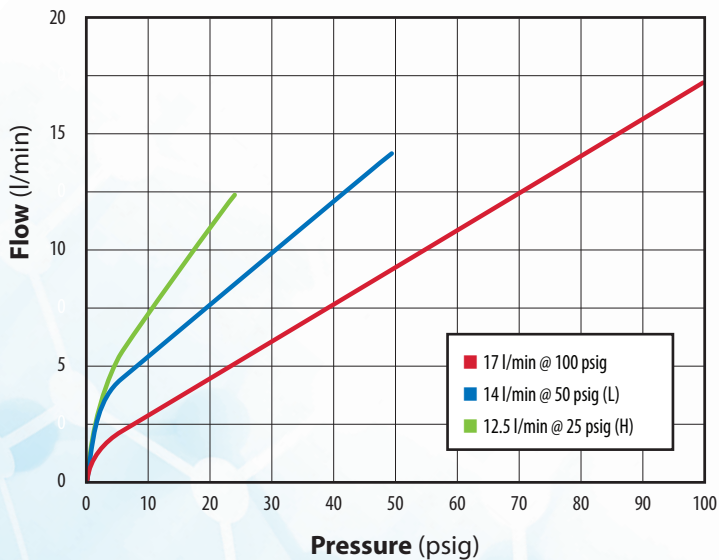


ES SERIES ELECTRONIC VALVES



The ES series features large cross sectional o-rings, minimal leak points, and proven poppet designs. To reduce the possibility of contamination, all mounting hardware is located outside of the flow path and no internal parts are threaded during assembly. The ES has the best performance-to-price ratio for low leak valves. The compact footprint coupled with the long life, and exceptional leak resistance make the ES line suited to improve reliability in a wide range of applications.

TYPICAL FLOW



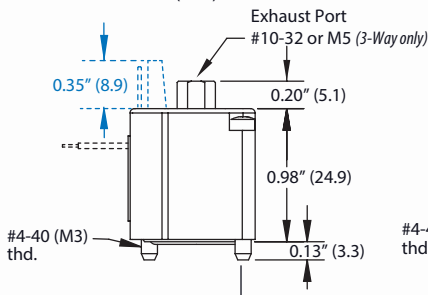
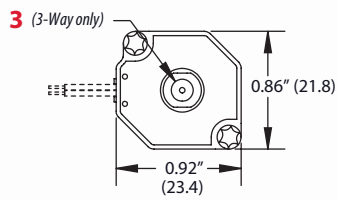
Coil Resistance	36 (6V), 144 (12V), 576 (24V)
Connection	Top terminal pins or radial wire leads
Current	017A (6V), 0.083A (12V), 0.042A (24V)
Cycle Life	Over 1 billion
Filtration (recommended)	40 micron
Function	2-way bidirectional; 3-way normally-closed or universally ported
Leak Rate	0.01 sccm
Material, Body	ENP carbon steel, nickel iron alloy, 300 series stainless steel, glass-filled nylon housing
Material, Seals	Nitrile standard; FKM and EPDM available
Material, Spring	Nickel alloy
Material, Wetted	Nickel alloy, stainless steel, ENP steel
Max. Flow	17 l/min @ 100 psig (7 bar) 14 l/min @ 50 psig (3.5 bar) 12.5 l/min @ 25 psig (1.7 bar)
Max. psig	105 (7.2 bar)
Medium	Clean, dry air and compatible gases
Mount	Manifold
Number of Ports	2 or 3
Operating Pressure	28" Hg Vac. to 25, 50, or 105 psig (700 mm Hg to 1.2, 3.4, or 7.2 bar)
Operating Temp. Range	32 to 150°F (0 to 65°C)
Port, Exhaust	3-Way: #10-32 or M5
Port, Inlet	No thread
Port, Outlet	No thread
Response Time	5 to 10 ms (nominal)
Thread	#4-40 or M3 (torque to 1-3 in.-lb.)
Voltage	6, 12, or 24 VDC
Voltage Operating Range	90-120%
Wattage	1 watt (nominal)
More Details	clippard.com/link/es-series

¹Minimum order quantity required

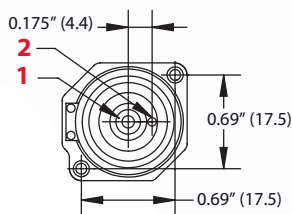
Does your application have requirements beyond what is listed? Contact Clippard to discuss how this valve can be modified to meet your specific needs.

Universally Ported

3-Way with
Terminal Pins or Wire Leads

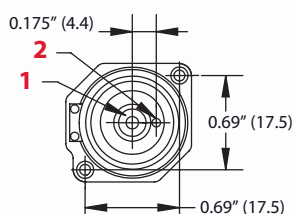
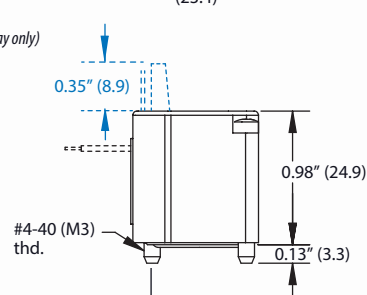
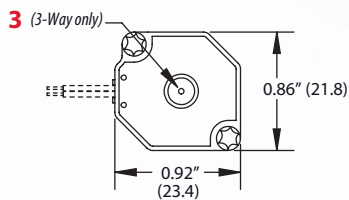


The stainless steel mounting screws are located outside the flow path and tightened to 1-3 in-lb. They require a T-10 Torx wrench.

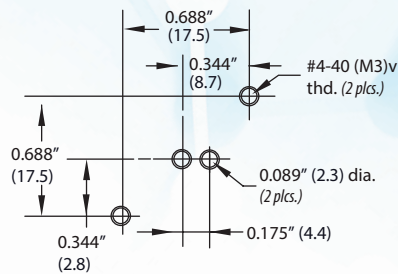


Normally Closed

2-Way or 3-Way with
Terminal Pins or Wire Leads



Mounting Interface



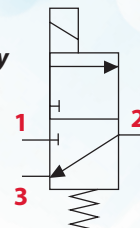
Dimensions shown are in inches
(millimeters listed in parentheses).

Visit clippard.com for more
detailed 2D and 3D drawings.

2-Way

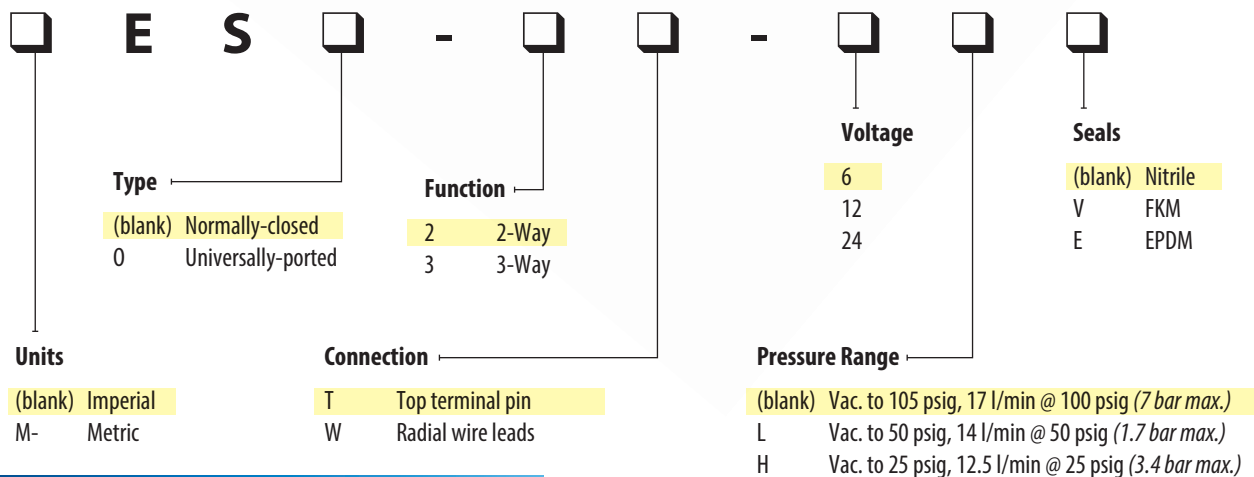


3-Way



- Ideal for ultra low leak applications
- No threads in flow path
- No anaerobic sealant
- Fast response—5 to 10 ms, nominal
- Close mounting—7/8" (22) on center, <1" (25.4) tall

ORDERING INFORMATION



ACCESSORIES

- C3-RXB18 Wire lead connector, 18" (457 mm), TE Connectivity #5-103956-2
ESM-CP Cover plate for unused manifold station

MANIFOLDS

- 26090-1 Single-Station, Side Port
26090-2 Single-Station, Bottom Port
26090-3 Double-Station

More manifolds available online

Example Part Number:

ES-2T-6

For more info, scan the
QR code or visit

clippard.com/link/es-series

